

R454b Refrigerant

SUBMITTAL DATA SHEET



Series Name: Extreme Heat AHU Series
Model Number: [MAUSE-H36B-2A/MO1HE-H36B-2A](#)

Air Handler Heat Pump System

Location:	Approval:
Engineer:	Date:
Submitted to:	Construction:
Submitted by:	Unit #:
Reference:	Drawing #:



INDOOR SPECIFICATION

ESP(inWG)		0~1.0
Indoor Air Flow (Turbo/H/M/L/Si) (CFM)		1236 / 1148 / 1059 / 971 / 971
Indoor Noise Level (Turbo/H/M/L/Si) (dBA)		49.5/ 49.5 / 48 / 31.5 / 31.5
Dimension (WxDxH)	inch	21-1/2 x 17-1/2 x 58-1/8
	mm	546 x 445 x 1476
Package (WxDxH)	inch	31-1/8 x 20-1/2 x 62-3/8
	mm	790 x 520 x 1585
Net/Gross Weight	lbs	149 / 182
	kg	67.7 / 82.6

OUTDOOR SPECIFICATION

Compressor Type		ROTARY
Compressor Model		MTH356UKRC8FQL
Refrigerant		R454B
Refrigerant Oil Charge(mL)		1,300
Refrigerant Oil		HAF68D1A
Outdoor Air Flow (Max) (CFM)		3,002
Outdoor Noise Level (dBA)		62.5
Dimension (WxDxH)	inch	37-1/4 x 16-1/8 x 31-7/8
	mm	946 x 410 x 810
Package (WxDxH)	inch	42-7/8 x 19-5/8 x 34-7/8
	mm	1090 x 500 x 885
Net/Gross Weight	lbs	167 / 176
	kg	75.6 / 80.0

EFFICIENCY

Cooling		Heating	
SEER2	17.7	HSPF2-4	10.0
EER2	12.0	COP	3.60

PERFORMANCE of Cooling

Cooling (Btu/hr)	
Rated Capacity	36,000
Min/Max Capacity	14,800 ~ 41,700
Moisture Removal(L/h)	3.39
Standard Operating Range(°F/°C)	-22~122 (-30~50)
Rated Cooling Conditions:	Indoor: 80°F DB/67°F WB Outdoor: 95°F DB/75°F WB

PERFORMANCE of Heating

Heating (Btu/hr)	
1. @ 47°F Rated	36,000

ELECTRICAL

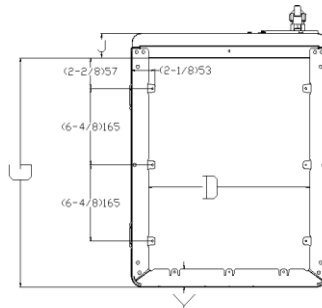
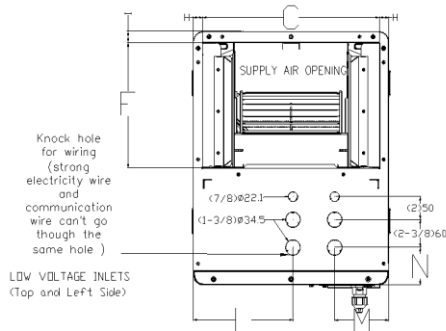
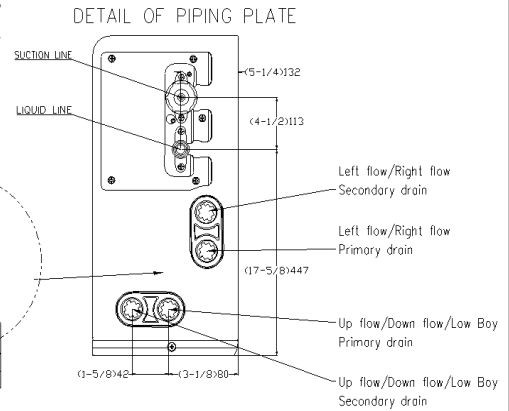
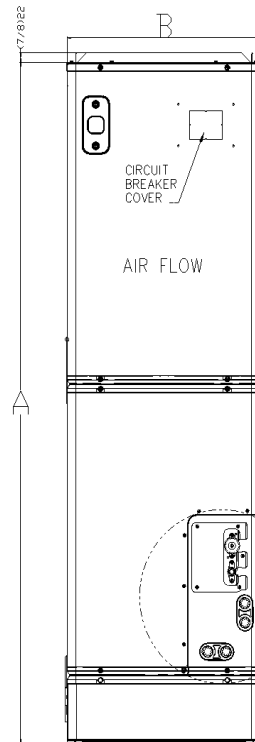
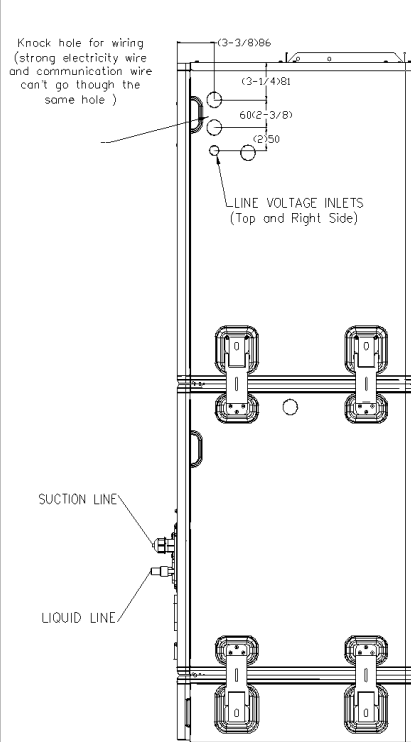
Indoor Power Supply	115/208/230V,60Hz,1Ph
Indoor MCA 115V/(208/230V)	8.0/6.0
Indoor MOP	15.0
Outdoor Power Supply	208/230V,60Hz,1Ph
Outdoor MCA	26.0
Outdoor MOP	30.0
Communication Wiring	AWG 20/2
Compressor RLA	18.0
Outdoor Fan Motor RLA	3.0
Outdoor Fan Motor W	120
Indoor Fan Motor RLA	4.5
Indoor Fan Motor W	600
System Power Input @ Cooling (W)	3,000 (1,180 ~ 3,930)
System Power Input @ Heating (W)	2,930 (645 ~ 3,110)
MCA: Min. circuit amps (A)	MOCP: Max. over current protection (A)
RLA: Rated load amps (A)	W: Fan motor rated output (W)

2. @ 47°F Min/Max Capacity	10,700 ~ 38,400
3. @ 17°F Rated	24,600
4. @ 5°F Rated: Capacity / COP	32,600 / 2.06
5. @ 5°F Max: Capacity	32,600
Standard Operating Range(°F/°C)	-22~75 (-30~24)
1. Rated Heating Conditions:	Indoor: 70°F DB/60°F WB Outdoor: 47°F DB/43°F WB
2. Rated Heating Conditions:	Indoor: 70°F DB/60°F WB Outdoor: 17°F DB/15°F WB
3. Heating Conditions, Compressor	Indoor: 70°F DB/60°F WB
Operating at Max. Frequency	Outdoor: 5°F DB/5°F WB

PIPING	
Throttle type(Indoor)	EXV
Throttle type(Outdoor)	EXV
Liquid Size	3/8" (9.52mm)
Gas Size	3/4" (19mm)
Max. Piping Length(ft/m)	213 (65)
Max. Height Difference(ft/m)	98 (30)
Max. Pre-charged Length(ft/m)	25 (7.5)
Refrigerant Pre-charged Amount(oz/kg)	127 (3.6)
Additional Charge of Refrigerant((oz/ft)/(g/m)	0.7 (65)
Connection Method	Flared

Indoor Unit Dimension

Unit: inch, mm

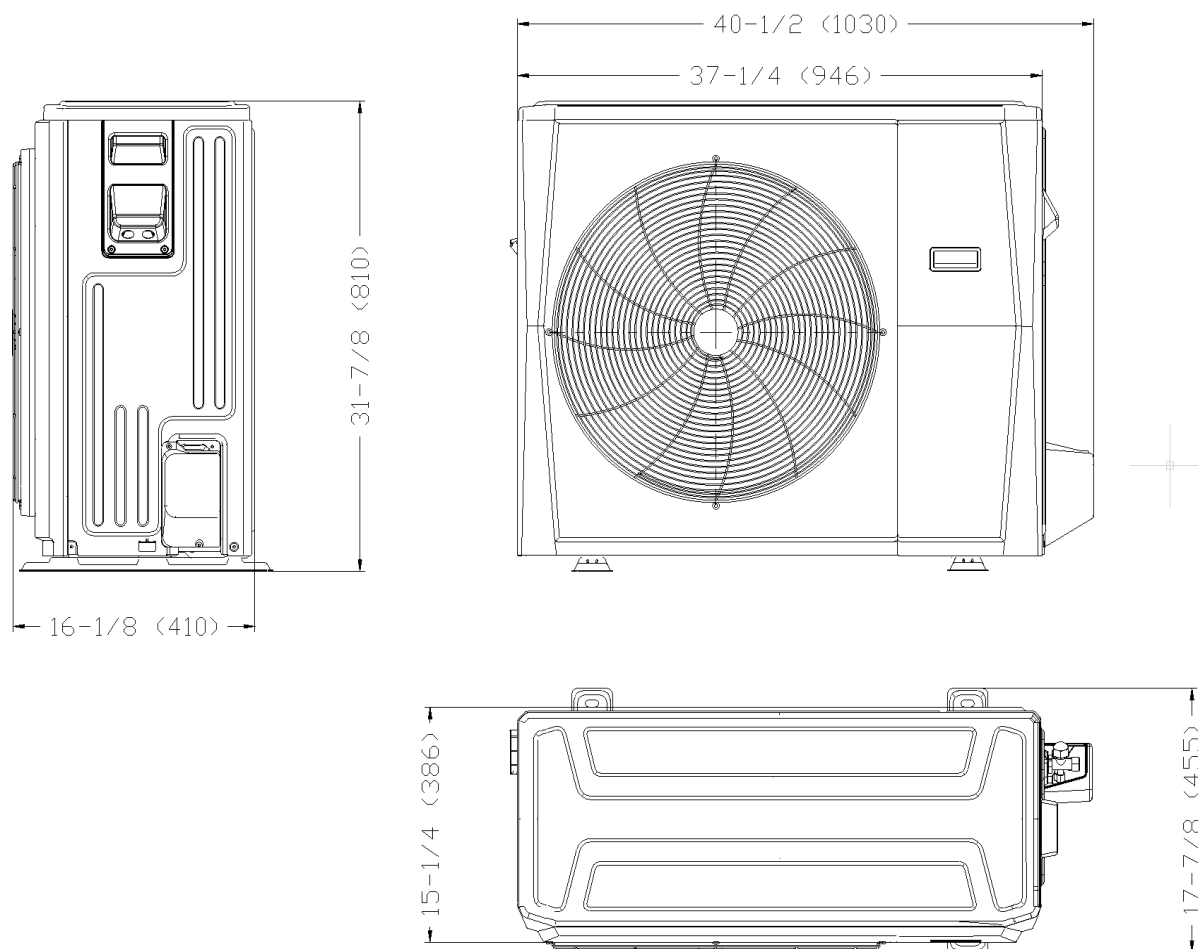


Model(Btu/h)		18K/24K		30K/36K		48K/54K	
Dimensions		inch	mm	inch	mm	inch	mm
A	Model Height	53-7/8	1368	58-1/8	1476	60-1/8	1526
B	Model Width	14-4/8	368	17-4/8	445	21-4/8	546
C	Supply Air Opening Width	12-7/8	328	16	405	19-7/8	506
D	Return Air Opening Width	11-1/8	282	14-4/8	368	18-4/8	470
E	Model Depth	21-1/2	546	21-1/2	546	21-1/2	546
F	Supply Air Opening Depth	10-5/8	271	10-5/8	271	10-5/8	271
G	Return Air Opening Depth	19	484	19	484	19	484
H	Supply Air Opening Clearance	7/8	22	7/8	22	7/8	22
I	Supply Air Opening Clearance	1	24	1	24	1	24
J	Return Air Opening Front Clearance	2-4/8	62	2-4/8	62	2-4/8	62
K	Return Air Opening Back Clearance	1-4/8	37	1-4/8	37	1-4/8	37
L	Top cover knock hole	/	/	9	229	10-7/8	275

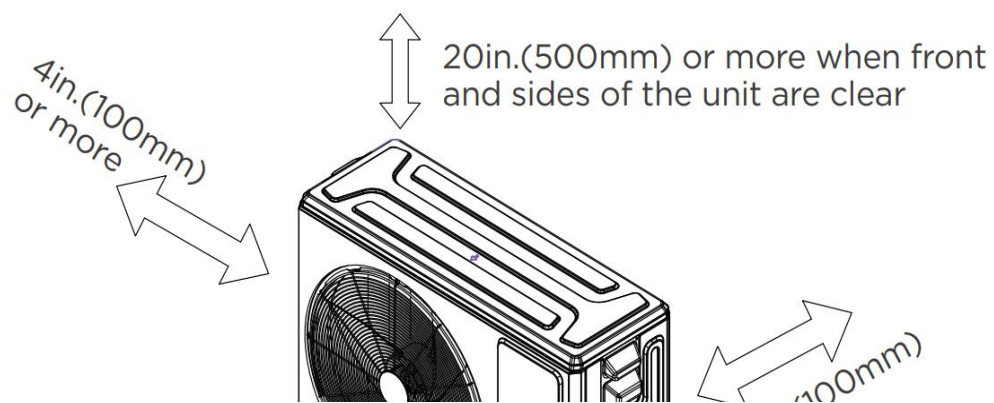
M	Top cover knock hole	4-1/2	113	4-7/8	124	5-1/8	131
N	Top cover knock hole	2	51	2	51	1-5/8	41

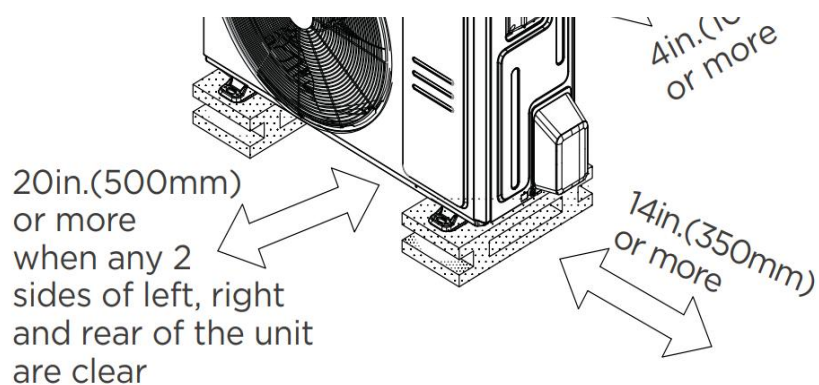
Outdoor Unit Dimension

Unit: inch, mm

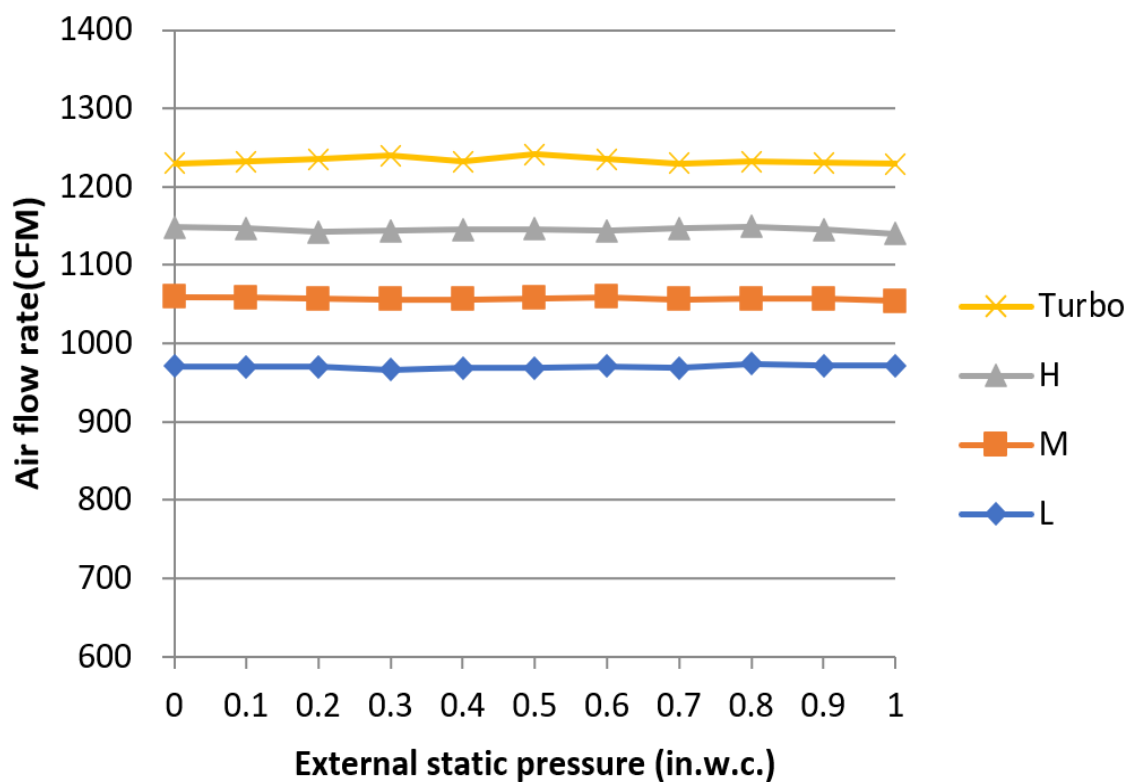


Installation Instruction For Outdoor Unit





Fan Performance For Indoor Unit



Features

- Multi-position installation: horizontal(left or right), vertical(up or down)
- 115/230V voltage compatible for IDU
- Aluminum Coil

- Constantly Air Flow system up to 1.0 In.W.G
- Optional Auxiliary heat kit up to 25kW
- Easy Maintenance
- Multiple control options available:
 - Two way communication wired controller:120N(X6)
 - Two way communication wired controller with built-in WiFi:120N(X6W)
 - Wireless remote controller
 - Third-Party 24V Thermostat
- Adaptive Control System
- High efficiency up to 19 SEER2, 12.5 EER2, 10.8 HSPF2
- 100% heat output at -13F*
- Chassis heater and crankcase heater equipped as standard

* For MVBDM-36HWFN10-WB3-D pairing with MOX630-36HFN10-M3X, rated cooling capacity/heating capacity at -13F=100%